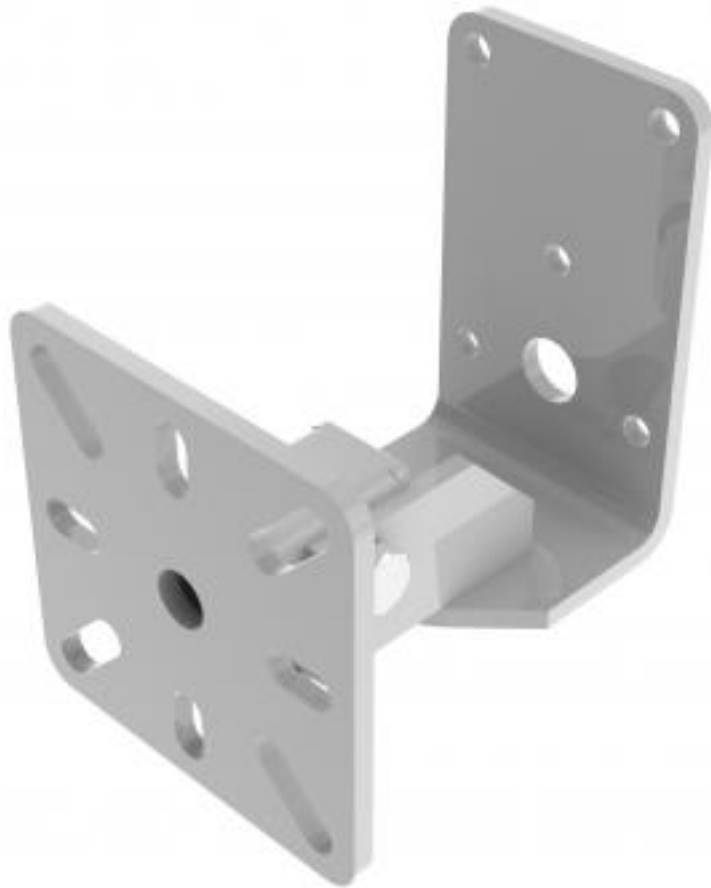


# WME90-W | Back Mount Wall Bracket



A versatile bracket with offset, tilt and swivel adjustment

- Bracket fixes to back of speaker
- Bracket mounts to wall
- Easily variable wall to speaker distance

**Compatible with manufacturer/model:**

- AQ10
- AQ12
- AQ28
- AQ8

**Materials of construction:** Powder coated mild steel

**Max weight (kg):** 18.00

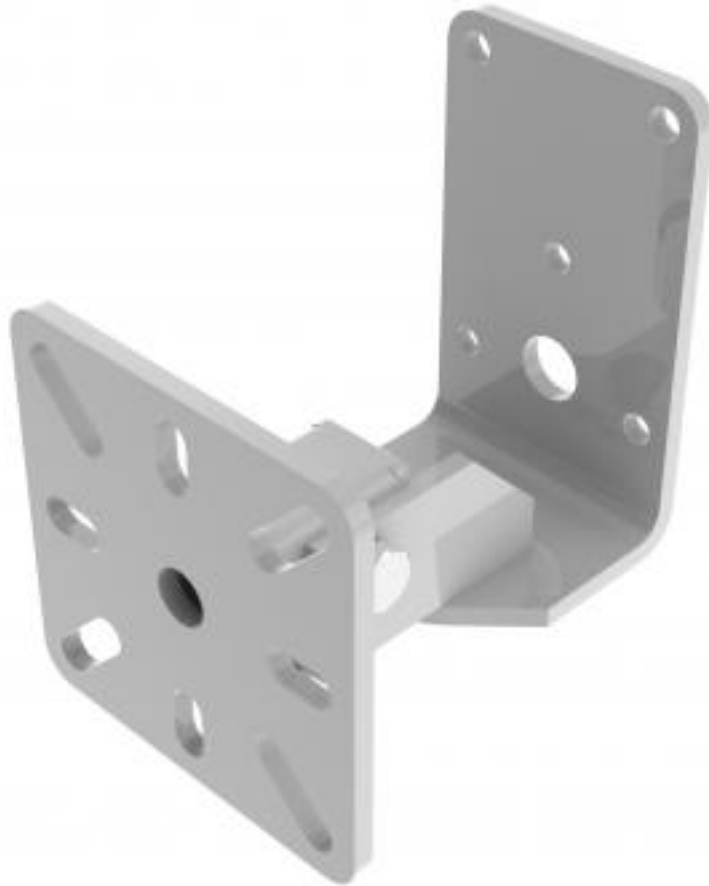
**Manufacturing address:**

Powerdrive Drum Company Ltd • Unit M1 Cherrycourt Way • Stanbridge Road  
Leighton Buzzard • Bedfordshire • LU7 4UH • UK  
T: +44 (0)1525 370292 • F: +44 (0)1525 852126

www.mypowerdrive.com • E&OE • All rights reserved • Powerdrive Drum Company Ltd 2015



# WME90-W | Back Mount Wall Bracket



<b>Product category:</b>	WALL
<b>W   L   H/D (mm):</b>	115.00   126/146   154.50
<b>Shipping weight (gms):</b>	1,323
<b>Mount position:</b>	Back
<b>Mount type:</b>	Powerdrive Type 90
<b>Bracket location:</b>	Wall
<b>Drop (mm)</b>	N/A
<b>Girder span (mm):</b>	N/A
<b>Swivel rotation angle:</b>	150 °
<b>Tilt angle:</b>	30 °

**Manufacturing address:**

Powerdrive Drum Company Ltd • Unit M1 Cherrycourt Way • Stanbridge Road  
Leighton Buzzard • Bedfordshire • LU7 4UH • UK  
T: +44 (0)1525 370292 • F: +44 (0)1525 852126